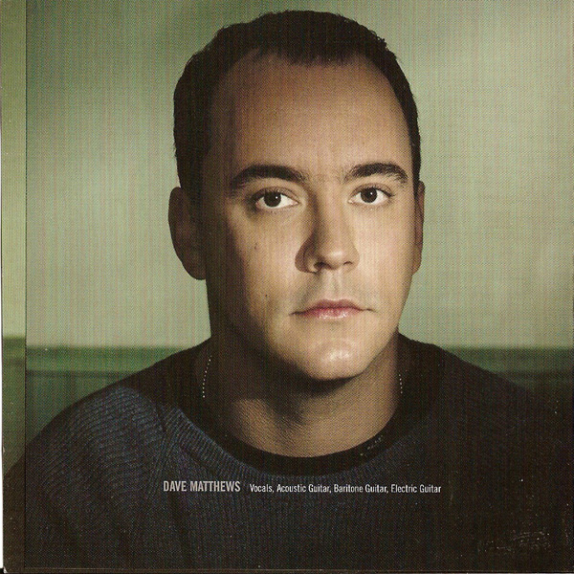


A black and white photograph of the Dave Matthews Band. The five band members are standing on a wooden deck outdoors. From left to right: a man in a dark jacket and cap, a man in a leather jacket and sunglasses, a man in a dark jacket and beanie, a man in a dark jacket and turtleneck, and a man in a leather jacket and beanie. The background shows a cloudy sky and some trees. The text "DAVE MATTHEWS BAND" is overlaid in large white letters, and "EVERYDAY" is overlaid in smaller white letters to the right.

DAVE MATTHEWS BAND EVERYDAY



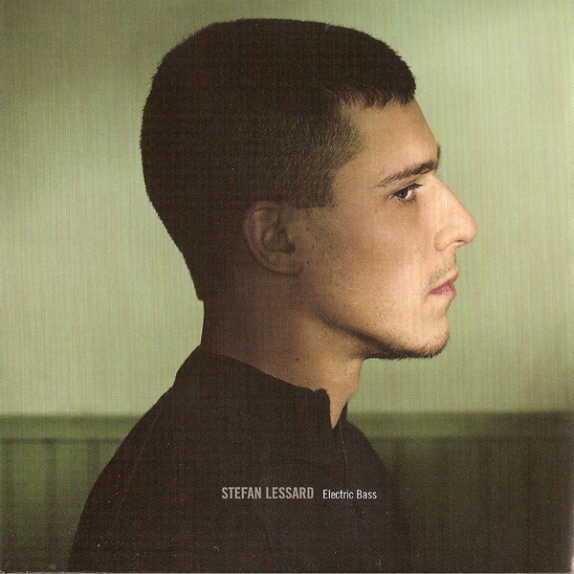
DAVE MATTHEWS Vocals, Acoustic Guitar, Baritone Guitar, Electric Guitar



LEROI MOORE Tenor Sax, Alto Sax, Contra Bass Clarinet, Flute, Background Vocals



CARTER BEAUFORD Drums, Congas, Vibraphone, Bongos, Background Vocals



STEFAN LESSARD Electric Bass



BOYD TINSLEY Violins, Background Vocals



DAVE MATTHEWS BAND EVERYDAY

DAVE MATTHEWS BAND EVERYDAY



DAVE MATTHEWS BAND EVERYDAY

I DID IT WHEN THE WORLD ENDS THE SPACE BETWEEN DREAMS OF OUR FATHERS SO RIGHT IF I HAD IT ALL
WHAT YOU ARE ANGEL FOOL TO THINK SLEEP TO DREAM HER MOTHER FATHER EVERYDAY



The RCA Records Label is a unit of BMG Entertainment/Tinies.
(Registered Marca) (Registrado) ©/©General Electric Co., USA
BMG logo is a trademark of BMG Music. ©2001 BMG Entertainment
Dave Matthews Band™ and DMB™ are trademarks of eunam ways inc.



0 7863-67988-2 0

www.davemattweeband.com

Manufactured and Distributed by BMG Distributor, a unit of BMG Entertainment
1540 Broadway, New York, New York 10036-4298
Printed in USA

DAVE MATTHEWS BAND

- I Did It 1
- When The World Ends 2
- The Space Between 3
- Dreams Of Our Fathers 4
- So Right 5
- If I Had It All 6

EVERYDAY

- What You Are 7
- Angel 8
- Fool To Think 9
- Sleep To Dream Her 10
- Mother Father 11
- Everyday 12



07863 6/998-2



MADE IN USA

2001 Dave Matthews Band® and DMB® and DMB logo is a trademark of BMG Music. © & © 2001 BMG Entertainment. Dave Matthews Band® and DMB® and DMB logo is a trademark of BMG Music.